

B-17 Solar Farm

Community information



About the project

Low Carbon is proposing to develop a new solar farm to be known as B-17 Solar Farm and located between the town of Framlingham and the village of Wickham Market, on land in the villages of Great Glemham, Parham and Marlesford, in Suffolk. The proposed solar farm will have a capacity of up to 49.9 megawatts (MW) of clean renewable electricity, produced by ground-mounted photovoltaic (PV) solar panels.

The site extends to approximately 77 hectares (190 acres) with the majority of the land being Grade 3b (described as Moderate Quality Agricultural Land) with a small section towards the north of the site being Grade 3a (Good Quality Agricultural Land). This clean power would be exported to the local electricity network, maintained by UK Power Networks, the distribution network operator (DNO). The connection is via underground cables to the substation, south-west of Parham.

This site was carefully selected through our development process ensuring it met with Low Carbon's criteria including: a viable grid connection nearby with capability of accepting the power generated; being a site which compares favourably in terms of planning designations and; a willing landowner.

49.9

MW solar farm capacity



16,581

Homes powered each year



11,210

Tonnes of CO₂ saved each year



5,175

equivalent cars taken off the road



About Low Carbon

Low Carbon, the developer of this project is a British-owned investment and asset management company whose business model is based on the financing, development, construction and operation of renewable energy projects at scale. Low Carbon is committed to making a positive and significant impact on the causes of climate change with the goal of a low carbon future with environmental stewardship and collaboration with local communities at the heart of this approach.

Community engagement

We want to ensure the community around this proposal is informed and fully understands the plans for the project. We encourage feedback and suggestions to help influence the design. Our digital engagement platform provides a simple and transparent way for the community to provide feedback, where comments can be pinned to an interactive map of the project area.

Biodiversity and solar farms

It's important to Low Carbon that the area is improved for nature and, as part of the planning process, Low Carbon is required to demonstrate that there will be biodiversity gain on the site. Across all its sites, Low Carbon seeks to increase biodiversity and support pollinators such as bees. It does this by understanding the characteristics of each site location and planting species that are native to that area. All existing woodland, trees and hedgerows are retained only ever adding new planting for additional screening.

Find out more

If you have queries in relation to this project, please contact the project team by emailing development@lowcarbon.com quoting "B-17 Solar Farm" in the subject header.

www.lowcarbon.com



Low Carbon is a certified B Corporation®. B Corps™ are businesses that meet the highest standards of social and environmental performance, transparency and accountability.

B-17 Solar Farm

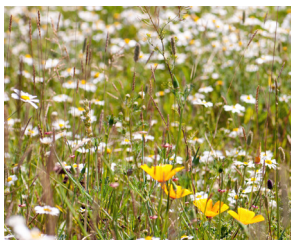
Introducing the plan



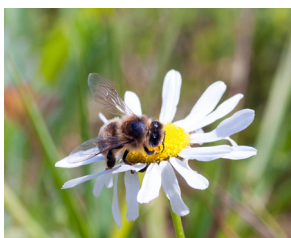
The site contains existing trees and hedgerows which will be retained and added to using native species.



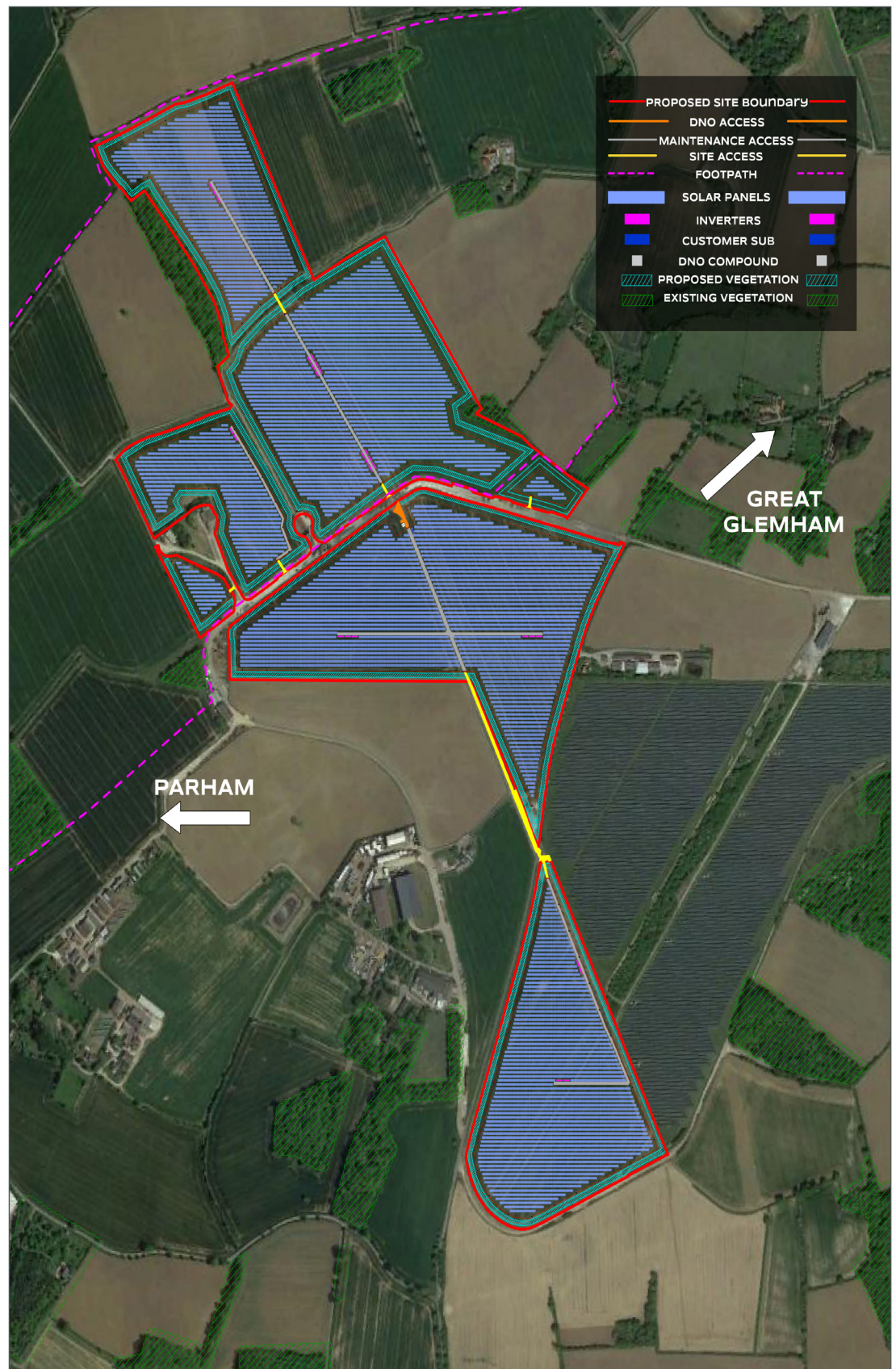
Sheep-grazing is possible between the rows of panels and is encouraged.



Within the site, biodiverse grassland meadows will be sown to support wildlife.



This type of habitat is important to support bees and other pollinators we rely on.



Find out more

If you have queries in relation to this project, please contact the project team by emailing development@lowcarbon.com quoting "B-17 Solar Farm" in the subject header.

www.lowcarbon.com



Low Carbon is a certified B Corporation®. B Corps™ are businesses that meet the highest standards of social and environmental performance, transparency and accountability.